

# The Bottle-Up™

The storage and display solution for home, office and retail



Sell more water by enhancing your product image with your company header and graphics



- 💧 Designed for home, office and retail use (3, 4 and 5 gallon bottles)
- 💧 Highly stable, durable, easy to clean and hygienic
- 💧 Injection molded from HDPE or optional recycled PET
- 💧 Keep your inventory near the cooler to keep the water flowing
- 💧 Available in single wide and double wide tray units
- 💧 Vertical and horizontal bottle storage options
- 💧 Flat top storage for coffee, cups and other breakroom supplies
- 💧 Protects the bottles from scuffing while in storage
- 💧 Full depth trays to fully enclose bottles - no necks sticking out

**Built-in Drip Tray**



Trays can be made with recycled PET

**Flat Top For Extra Storage**



Prevent out-of-stocks

**Rugged, stackable & strong**



Multiple Configurations

Note: Recommended single wide stacking height no more than 4 layers high (bottles laying horizontal on a level surface)  
Recommended single wide stacking height no more than 2 layers high (bottles standing vertical on a level surface)



**Polymer  
Solutions  
International**

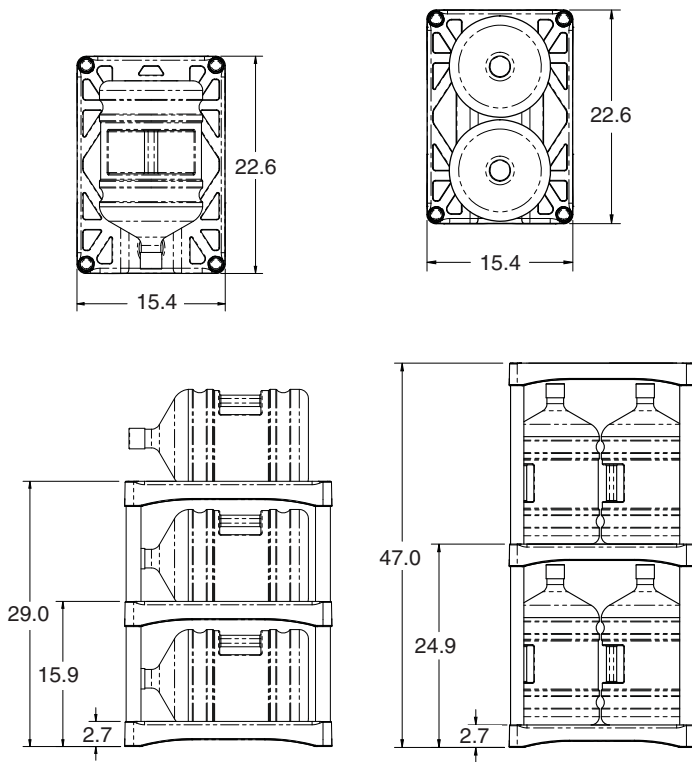
Visit us at: [www.prostack.com](http://www.prostack.com)

Call: 1 (609) 714-3390 • Toll Free: (877) 444-7225 • FAX 1 (610) 356-6327

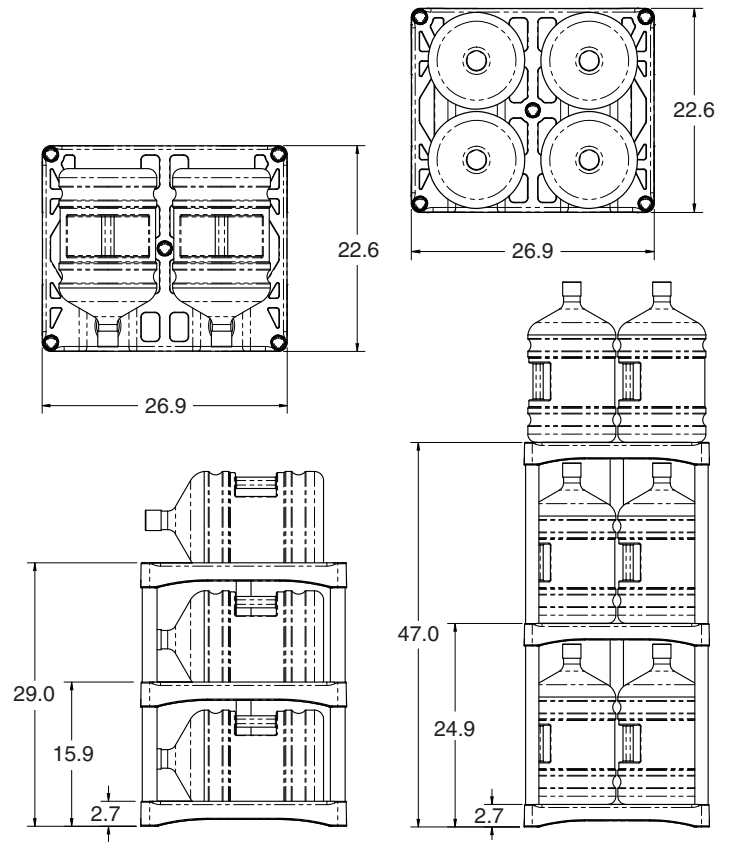
Email: [info@prostack.com](mailto:info@prostack.com) or Write: 9 Roxbury Drive, Medford, New Jersey 08055, USA

# The Bottle-Up™

## SINGLE WIDE ASSEMBLY



## DOUBLE WIDE ASSEMBLY



## Ordering Options

### The Bottle-Up™ Single Wide

3H pack: 3 tray units and 8 legs (capacity 3 bottles horizontal)

3V pack: 3 tray units and 8 legs (capacity 6 bottles vertical)

5H pack: 5 tray units and 16 legs (capacity 5 bottles horizontal)

### The Bottle-Up™ Double Wide

3H pack: 3 tray units and 10 legs (capacity 6 bottles horizontal)

3V pack: 3 tray units and 10 legs (capacity 12 bottles vertical)

5H pack: 5 tray units and 20 legs (capacity 10 bottles horizontal)

### The Bottle-Up™ Double Wide Retail Rack

4V pack: 4 tray units and 15 legs (capacity 12 bottles vertical)

\*Please call to discuss if you have special ordering needs

**“Convenient” and “Efficient” bottle storage solutions...Also perfect for crisis and emergency relief programs in homes, schools, civil services, fire stations**

**Call for pricing and ordering information.**